

### 1st Start Class C Boats Signals and Flags

- 
**3 Horn Blasts ATTENTION! READY?**  
 Yellow/Black Checkered Flag - UP  


---

- 
**1 Horn Blast at 5 Minute Warning**  
 C Flag Up  


---

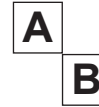

- 
**1 Horn Blast at 4 Minute Warning**  
 Blue Flag with White Square - UP  

- 1 Horn Blast at 1 Minute Warning**  
 Blue Flag with White Square - Down  





---

- 
**1 Horn Blast at START**  
 C Flag - DOWN, A & B Flag - Up  




### 2nd Start Class A & B Boats Signals and Flags

- 
**A & B Flag Up**  
**1 Horn Blast at 5 Minute Warning**  


---

- 
**1 Horn Blast at 4 Minute Warning**  
 Blue Flag with White Square - UP  

- 1 Horn Blast at 1 Minute Warning**  
 Blue Flag with White Square - Down  


---

- 
**1 Horn Blast at START**  
 A & B Flag - DOWN  


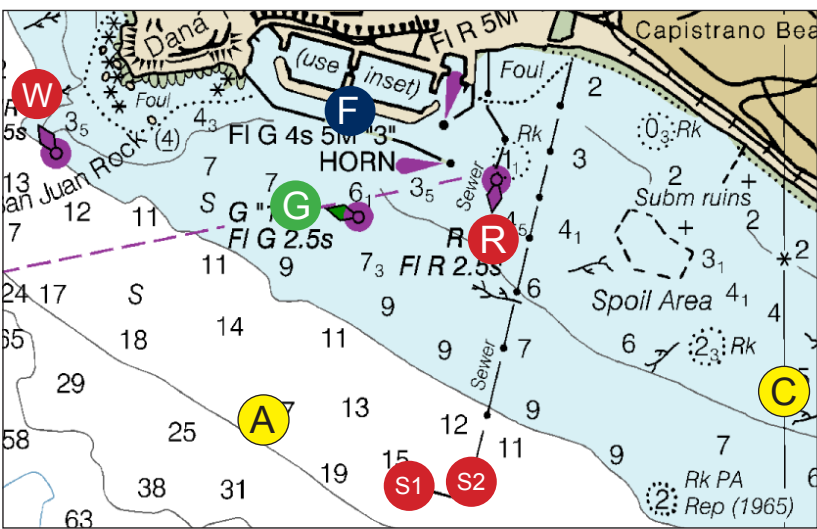
Radio Communications on CH 68

### Race Courses

No.	Marks	Distance
52	G A F	2.8 NM
55	G As Gs F	3.1 NM
56	G As Ws F	4.4 NM
59	G C F	3.4 NM
63	G F	1.4 NM
64	G W A F	4.4 NM
65	G W F	3.4 NM
67	G S1s Gs F	3.0 NM
69	G S1 F	2.8 NM
70	G S2 C F	3.9 NM

### Race Mark Coordinates

<b>A</b> Yellow Spar	N33° 26.32' W117° 42.32'
<b>C</b> Yellow Spar	N33° 26.38' W117° 40.19'
<b>S1</b> West Sewer	N33° 26.15 W117° 41.63
<b>S2</b> East Sewer	N33° 26.07 W117° 41.37
<b>G</b> Green Buoy	N33° 27.10' W117° 41.90'
<b>W</b> Whistle Buoy	N33° 27.30' W117° 43.30'
<b>R</b> Red Nun Buoy	N33° 27.20' W117° 41.30'
<b>F</b> Abeam Aventura	N33° 27.70' W117° 42.00'



Leave All Marks to Port Unless Indicated by "s"  
 "F" Finish is Abeam of Aventura Sailing in the Main Channel

### Race Mark Magnetic Bearings and Nautical Miles (Approx.)

TO FROM	A	C	G	W	R	F	S1	S2
A		075° 1.8NM	011° 0.9NM	307° 1.3NM	211° 1.3NM		107° .6NM	97° .8NM
C					304° 1.2 NM			
G	191° 0.9NM	103° 1.6NM		266° 1.2NM	245° .63NM		153° 1NM	144° 1NM
W	127° 1.3NM		086° 1.2NM		262° 1.6NM			
R						97° .6NM		